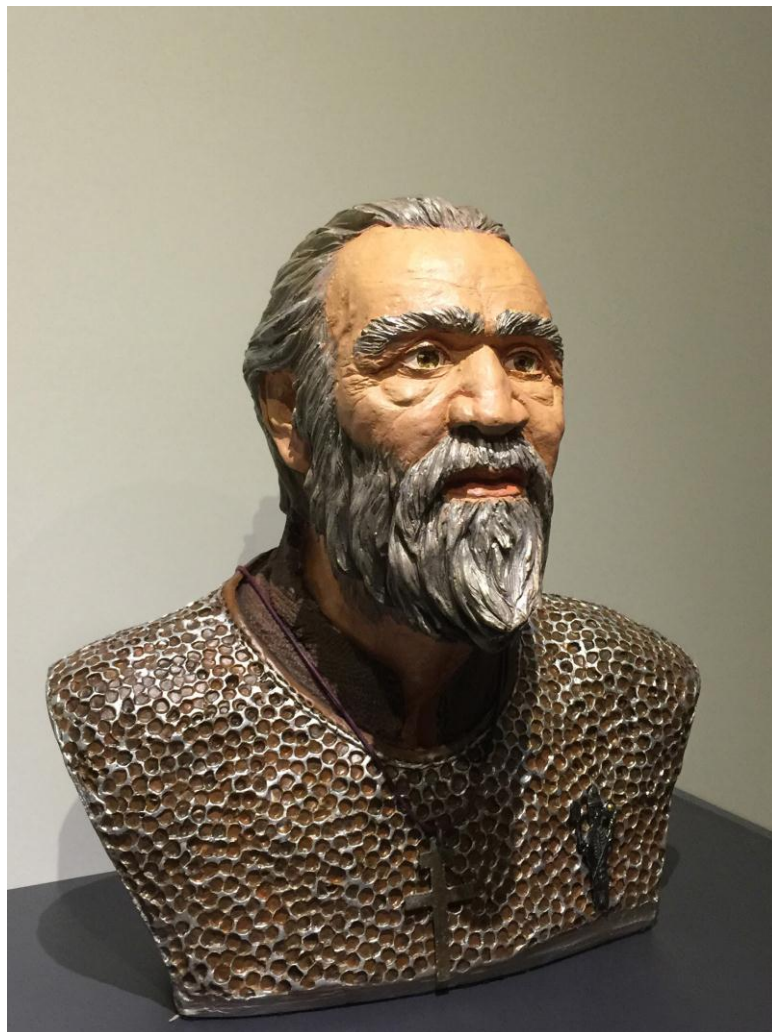


---

# Maastricht UMC<sup>+</sup>

RECONSTRUCTION OF SOFT FACIAL PARTS

PRELIMINARY PROGRAM 10-12 SEPTEMBER 2015



*Final reconstruction of Saint Gerlach by Remie Bakker/Arno Lataster/Jacques Spee*

Dear colleagues,

On behalf of the organizing committee, I would like to welcome you in the MECC for the 'Reconstruction of soft facial parts' congress. It is a unique opportunity for forensic medicine and plastic surgery to collaborate in the reconstruction of the face. Plastic surgeons can operate throughout all layers, and therefore can understand the anatomy of the face.

## Faculty

A. Lataster - Department of Anatomy and Embryology, Maastricht University, the Netherlands

R. Naeve - University of Manchester, Unit of Art in Medicine , Rye, Sussex, UK

R. Bakker - Manimal Works Rotterdam, the Netherlands

J. Spee - Master Programme in Scientific Illustration, Maastricht, the Netherlands

G. Salimbeni - Clinica San Rossore , Pisa, Italy

S. Tuinder- Department of Plastic Surgery, MUMC Maastricht, the Netherlands

R. Van Der Hulst - Department of Plastic Surgery, MUMC Maastricht, the Netherlands

## Location

MECC Maastricht  
Address: Forum 100, 6229 GV Maastricht

## Registration

Mailadress: s.tuinder@mumc.nl

## First day

9.00 – 9.30AM	Opening and welcome
9.30 – 10.00AM	History of RSFP <i>Richard Neave / Jacques Spee</i>
10.00 – 10.15AM	History of anatomical studies in the face <i>Arno Lataster</i>
10.15 – 10.30AM	History of surgical facial reconstruction <i>Grazia Salimbeni</i>
10.30 – 11.00AM	Explanation first step of RSFP <i>Remie Bakker</i>
11.00 - 11.15AM	Coffee
11.15 – 13.00PM	Working on the skull
13.00 – 14.00PM	Lunch
14.00 – 16.00PM	Working on the skull
16.00 – 16.30PM	Saint Gerlach story <i>Arno Lataster / Jacques Spee</i>
16.30 – 16.45PM	Coffee
16.45 – 18.00PM	Working on the skull

## Second day

9.00 – 9.15AM	Bony anatomy <i>Arno Lataster</i>
9.15 – 10.15AM	Muscular anatomy of the face and clinical application with specimens <i>Arno Lataster / Stefania Tuinder</i>
10.15 – 10.45AM	Explanation second step of reconstruction procedure
10.45 – 11.00AM	Coffee
11.00 – 13.00PM	Working on the skull
13.00 – 14.00PM	Lunch
14.00 – 18.00PM	Working on skull (Coffee possible in between)

## Third day

9.00 – 10.00AM	Anatomy of superficial structures in the face with specimens <i>Arno Lataster / Stefania Tuinder / Grazia Salimbeni</i>
10.00 – 13.00PM	Working on skull
13.00 – 14.00PM	Lunch
14.00 – 15.00PM	Evaluation/discussion